



**LED SURFACE
SUSPENDED LINEAR
TASK LIGHTS**



Antesa LED Surface/Suspended Linear Task Lights

General Specifications

Mounting Type	Surface
Limited Warranty	2 Years
Lighting Source Type	SMD LED

Fixture Specifications

Housing Material	Extruded Aluminium
Diffuser Material	Polycarbonate
Surface Finish	Anodised
Driver Type	External

Performance Specifications

Colour rendering index (CRI)	80+
Start up time	Instant
Efficacy (Lm / W)	100+

Electrical Specifications

Input Voltage (VAC)	150 - 270 VAC
Total Harmonic Distorsion	Upto 10%
Input Frequency	50 to 60 Hz
Power Factor	0.95 +
Driver Efficiency	Upto 80%

Safety Features

Ingress Protection	IP44
Surge Protection	Upto 2KV
Short Circuit Protection	Yes
Open Circuit Protection	Yes

Environmental Specification

Working Temperature	0 to 40 C
Vibrations	1G

Mechanical Specifications

Luminaire Dimension (L X W X H)	70mm X 90mm
---------------------------------	-------------

HOW TO ORDER

HUB - ANTESA - 3W/F - GR - 4050K

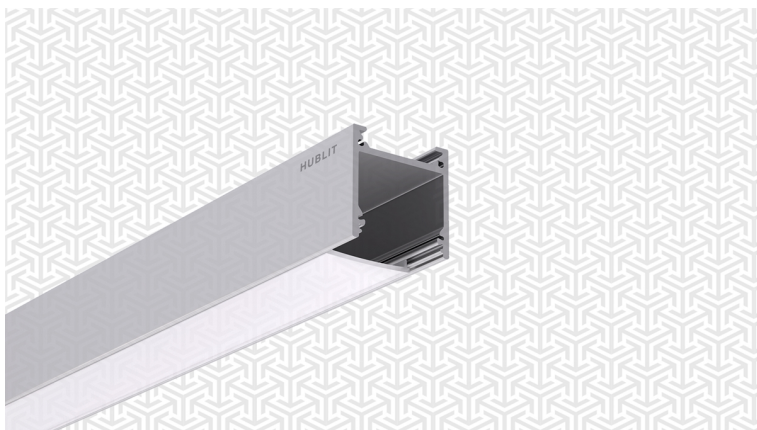
Input Power	1	Housing Colour	2
3W/F : 3W/F		GR : Grey	
9W/F : 9W/F		WH : White	
15W/F : 15W/F		BL : Black	

Colour Temperature (CCT)	3
2732K : 2700K - 3200K	
4050K : 4000K - 5000K	
6050K : 6000K - 6500K	

How to order example

To order a Hublit products, you can choose an Input Power from the values above from the minimum value to the maximum value, in this case we use smallest value. Similarly you can choose from the Colour Temperature (CCT) options from 2700K to 6500K and so on to generate the model number; Please find the example of a filled model number for this product.

Example : HUB - ANTESA - 3W/F - GR - 4050K



Certico LED Surface/Suspended Linear Task Lights

General Specifications

Mounting Type	Surface
Limited Warranty	2 Years
Lighting Source Type	SMD LED

Fixture Specifications

Housing Material	Extruded Aluminium
Diffuser Material	Polycarbonate
Surface Finish	Anodised
Driver Type	External

Performance Specifications

Colour rendering index (CRI)	80+
Start up time	Instant
Efficacy (Lm / W)	100+

Electrical Specifications

Input Voltage (VAC)	150 - 270 VAC
Total Harmonic Distorsion	Upto 10%
Power Factor	0.95 +
Driver Efficiency	Upto 80%

Safety Features

Ingress Protection	IP44
Surge Protection	Upto 2KV
Short Circuit Protection	Yes
Open Circuit Protection	Yes

Environmental Specification

Working Temperature	0 to 40 C
Vibrations	1G

Mechanical Specifications

Luminaire Dimension (L X W X H)	50mm X 50mm
---------------------------------	-------------

HOW TO ORDER

HUB - CERTICO - 12W/F - GR - 4050K

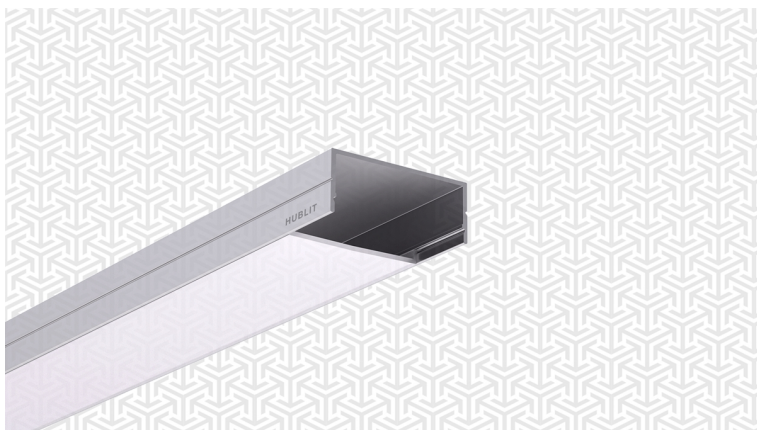
Input Power	1	Housing Colour	2
12W/F : 12W/F		GR : Grey	
20W/F : 20W/F		WH : White	
		BL : Black	

Colour Temperature (CCT)	3
2732K : 2700K - 3200K	
4050K : 4000K - 5000K	
6050K : 6000K - 6500K	

How to order example

To order a Hublit products, you can choose an Input Power from the values above from the minimum value to the maximum value, in this case we use smallest value. Similarly you can choose from the Colour Temperature (CCT) options from 2700K to 6500K and so on to generate the model number; Please find the example of a filled model number for this product.

Example : HUB - CERTICO - 12W/F - GR - 4050K



Contina LED Surface/Suspended Linear Task Lights

General Specifications

Mounting Type	Suspended
Limited Warranty	2 Years
Lighting Source Type	SMD LED

Fixture Specifications

Housing Material	Extruded Aluminium
Diffuser Material	Polycarbonate
Surface Finish	Powder Coated
Driver Type	External

Performance Specifications

Colour rendering index (CRI)	80+
Start up time	Instant
Efficacy (Lm / W)	100+

Electrical Specifications

Input Voltage (VAC)	150 - 270 VAC
Total Harmonic Distorsion	Upto 10%
Power Factor	0.95 +
Driver Efficiency	Upto 80%

Safety Features

Ingress Protection	IP44
Surge Protection	Upto 2KV
Short Circuit Protection	Yes
Open Circuit Protection	Yes

Environmental Specification

Working Temperature	0 to 40 C
Vibrations	1G

Mechanical Specifications

Luminaire Dimension (L X W X H)	50mm X 20mm
---------------------------------	-------------

HOW TO ORDER

HUB - CONTINA - 9W/F - WH - 6050K

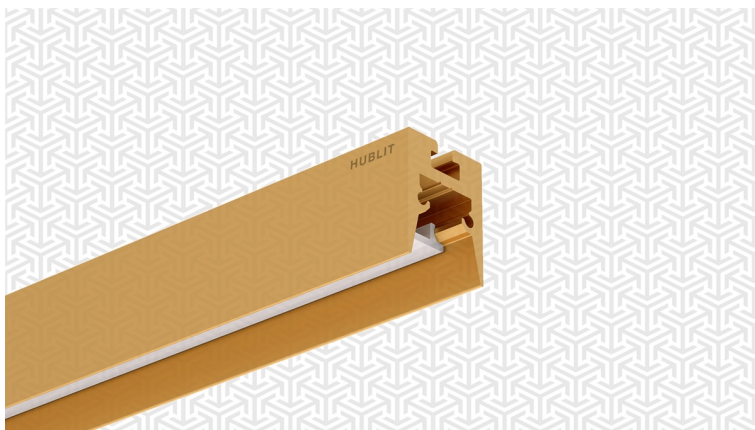
Input Power	1	Housing Colour	2
3W/F : 3W/F		GR : Grey	
9W/F : 9W/F		WH : White	
15W/F : 15W/F		BL : Black	

Colour Temperature (CCT)	3
2732K : 2700K - 3200K	
4050K : 4000K - 5000K	
6050K : 6000K - 6500K	

How to order example

To order a Hublit products, you can choose an Input Power from the values above from the minimum value to the maximum value, in this case we use smallest value. Similarly you can choose from the Colour Temperature (CCT) options from 2700K to 6500K and so on to generate the model number; Please find the example of a filled model number for this product.

Example : HUB - CONTINA - 9W/F - WH - 6050K



Englo LED Surface/Suspended Linear Task Lights

General Specifications

Mounting Type	Surface
Limited Warranty	2 Years
Lighting Source Type	SMD LED

Fixture Specifications

Housing Material	Extruded Aluminium
Diffuser Material	Polycarbonate
Surface Finish	Anodised
Driver Type	External

Performance Specifications

Colour rendering index (CRI)	80+
Start up time	Instant
Efficacy (Lm / W)	100+

Electrical Specifications

Input Voltage (VAC)	150 - 270 VAC
Total Harmonic Distorsion	Upto 10%
Input Frequency	50 to 60 Hz
Power Factor	0.95 +
Driver Efficiency	Upto 80%

Safety Features

Ingress Protection	IP44
Surge Protection	Upto 2KV
Short Circuit Protection	Yes
Open Circuit Protection	Yes
Over Voltage Protection	Yes

Environmental Specification

Working Temperature	0 to 40 C
Vibrations	1G

Mechanical Specifications

Luminaire Dimension (L X W X H)	13mm X 16mm
---------------------------------	-------------

HOW TO ORDER

HUB - ENGLO - 1W/F - BL - 4050K

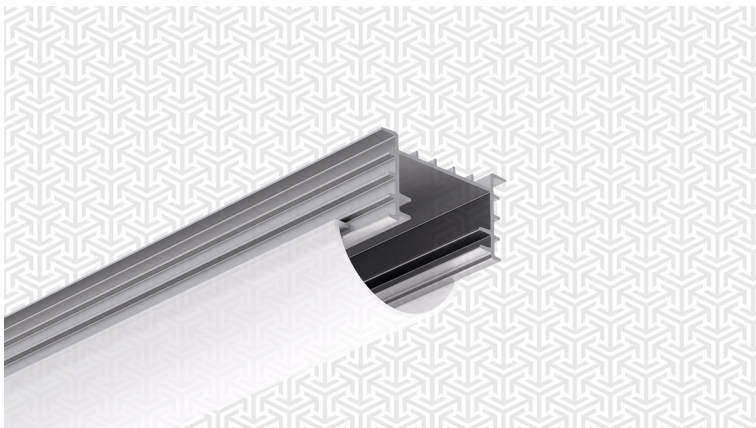
Input Power	1	Housing Colour	2
1W/F : 1W/F		GR : Grey	
		WH : White	
		BL : Black	

Colour Temperature (CCT)	3
2732K : 2700K - 3200K	
4050K : 4000K - 5000K	
6050K : 6000K - 6500K	

How to order example

To order a Hublit products, you can choose an Input Power from the values above from the minimum value to the maximum value, in this case we use smallest value. Similarly you can choose from the Colour Temperature (CCT) options from 2700K to 6500K and so on to generate the model number; Please find the example of a filled model number for this product.

Example : HUB - ENGLO - 1W/F - BL - 4050K



Entral LED Surface/Suspended Linear Task Lights

General Specifications

Mounting Type	Surface
Limited Warranty	2 Years
Lighting Source Type	SMD LED

Fixture Specifications

Housing Material	Extruded Aluminium
Diffuser Material	Polycarbonate
Surface Finish	Anodised
Driver Type	External

Performance Specifications

Colour rendering index (CRI)	80+
Start up time	Instant
Efficacy (Lm / W)	100+

Electrical Specifications

Input Voltage (VAC)	150 - 270 VAC
Total Harmonic Distorsion	Upto 10%
Power Factor	0.95 +
Driver Efficiency	Upto 80%

Safety Features

Ingress Protection	IP44
Surge Protection	Upto 2KV
Short Circuit Protection	Yes
Open Circuit Protection	Yes

Environmental Specification

Working Temperature	0 to 40 C
Vibrations	1G

Mechanical Specifications

Luminaire Dimension (L X W X H)	16mm X 18mm
---------------------------------	-------------

HOW TO ORDER

HUB - ENTRAL - 1W/F - BL - 6050K

Input Power	1	Housing Colour	2
1W/F : 1W/F		GR : Grey	
3W/F : 3W/F		WH : White	
		BL : Black	

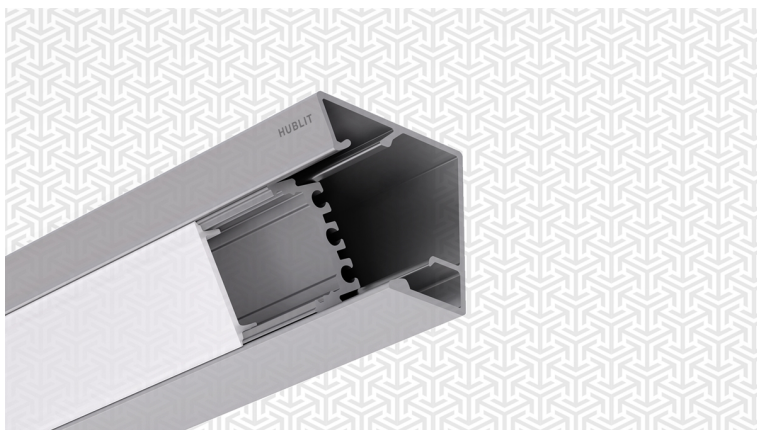
Colour Temperature (CCT)	3
2732K : 2700K - 3200K	
4050K : 4000K - 5000K	
6050K : 6000K - 6500K	

How to order example

To order a Hublit products, you can choose an Input Power from the values above from the minimum value to the maximum value, in this case we use smallest value. Similarly you can choose from the Colour Temperature (CCT) options from 2700K to 6500K and so on to generate the model number; Please find the example of a filled model number for this product.

Example : HUB - ENTRAL - 1W/F - BL - 6050K





Farmale LED Surface/Suspended Linear Task Lights

General Specifications

Mounting Type	Surface
Limited Warranty	2 Years
Lighting Source Type	SMD LED

Fixture Specifications

Housing Material	Extruded Aluminium
Diffuser Material	Polycarbonate
Surface Finish	Anodised
Driver Type	External

Performance Specifications

Colour rendering index (CRI)	80+
Start up time	Instant
Efficacy (Lm / W)	100+

Electrical Specifications

Input Voltage (VAC)	150 - 270 VAC
Total Harmonic Distorsion	Upto 10%
Power Factor	0.95 +
Driver Efficiency	Upto 80%

Safety Features

Ingress Protection	IP44
Surge Protection	Upto 2KV
Short Circuit Protection	Yes
Open Circuit Protection	Yes
Over Voltage Protection	Yes

Environmental Specification

Working Temperature	0 to 40 C
Vibrations	1G

Mechanical Specifications

Luminaire Dimension (L X W X H)	29mm X 26.5mm
---------------------------------	---------------

HOW TO ORDER

HUB	-	FARMALE	-	1W/F	-	WH	-	2732K
-----	---	---------	---	------	---	----	---	-------

Input Power	1	Housing Colour	2
1W/F : 1W/F		GR : Grey	
3W/F : 3W/F		WH : White	
5W/F : 5W/F		BL : Black	

Colour Temperature (CCT)	3
2732K : 2700K - 3200K	
4050K : 4000K - 5000K	
6050K : 6000K - 6500K	

How to order example

To order a Hublit products, you can choose an Input Power from the values above from the minimum value to the maximum value, in this case we use smallest value. Similarly you can choose from the Colour Temperature (CCT) options from 2700K to 6500K and so on to generate the model number; Please find the example of a filled model number for this product.

Example : HUB - FARMALE - 1W/F - WH - 2732K



Maddele LED Surface/Suspended Linear Task Lights

General Specifications

Mounting Type	Suspended
Limited Warranty	2 Years

Fixture Specifications

Housing Material	Extruded Aluminium
Diffuser Material	Polycarbonate
Surface Finish	Anodised
Driver Type	External

Performance Specifications

Colour rendering index (CRI)	80+
Start up time	Instant
Efficacy (Lm / W)	100+

Electrical Specifications

Input Voltage (VAC)	150 - 270 VAC
Total Harmonic Distorsion	Upto 10%
Power Factor	0.95 +
Driver Efficiency	Upto 80%

Safety Features

Ingress Protection	IP44
Surge Protection	Upto 2KV
Short Circuit Protection	Yes
Open Circuit Protection	Yes

Environmental Specification

Working Temperature	0 to 40 C
Vibrations	1G

Mechanical Specifications

Luminaire Dimension (L X W X H)	35mm X 20mm
---------------------------------	-------------

HOW TO ORDER

HUB - MADDELE - 9W/F - WH - 4050K

Input Power	1	Housing Colour	2
3W/F : 3W/F		GR : Grey	
9W/F : 9W/F		WH : White	
15W/F : 15W/F		BL : Black	

Colour Temperature (CCT)	3
2732K : 2700K - 3200K	
4050K : 4000K - 5000K	
6050K : 6000K - 6500K	

How to order example

To order a Hublit products, you can choose an Input Power from the values above from the minimum value to the maximum value, in this case we use smallest value. Similarly you can choose from the Colour Temperature (CCT) options from 2700K to 6500K and so on to generate the model number; Please find the example of a filled model number for this product.

Example : HUB - MADDELE - 9W/F - WH - 4050K



Mattivo LED Surface/Suspended Linear Task Lights

Suspended

General Specifications

Mounting Type	Suspended
Limited Warranty	2 Years
Lighting Source Type	SMD LED

Fixture Specifications

Housing Material	Extruded Aluminium
Diffuser Material	Polycarbonate
Surface Finish	Anodised
Driver Type	External

Performance Specifications

Colour rendering index (CRI)	80+
Start up time	Instant
Efficacy (Lm / W)	100+

Electrical Specifications

Input Voltage (VAC)	150 - 270 VAC
Total Harmonic Distorsion	Upto 10%
Input Frequency	50 to 60 Hz
Power Factor	0.95 +
Driver Efficiency	Upto 80%

Safety Features

Ingress Protection	IP44
Surge Protection	Upto 2KV
Short Circuit Protection	Yes
Open Circuit Protection	Yes

Environmental Specification

Working Temperature	0 to 40 C
Vibrations	1G

Mechanical Specifications

Luminaire Dimension (L X W X H)	18.5mm X 16mm
---------------------------------	---------------

HOW TO ORDER

HUB - MATTIVO - 1W/F - WH - 4050K

Input Power	1	Housing Colour	2
1W/F : 1W/F		GR : Grey	
3W/F : 3W/F		WH : White	
5W/F : 5W/F		BL : Black	

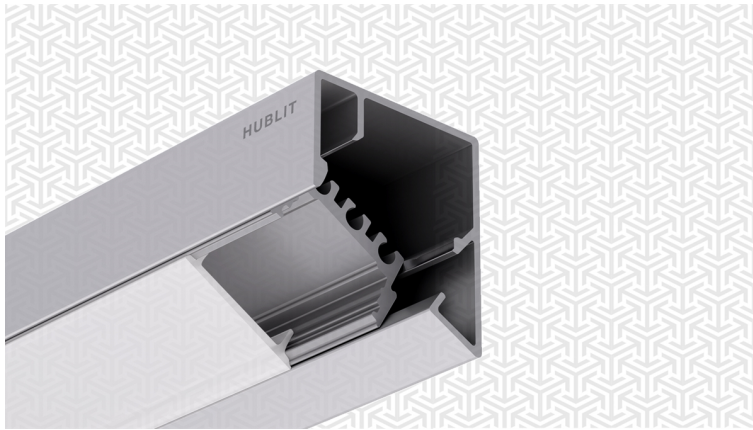
Colour Temperature (CCT)	3
2732K : 2700K - 3200K	
4050K : 4000K - 5000K	
6050K : 6000K - 6500K	

How to order example

To order a Hublit products, you can choose an Input Power from the values above from the minimum value to the maximum value, in this case we use smallest value. Similarly you can choose from the Colour Temperature (CCT) options from 2700K to 6500K and so on to generate the model number; Please find the example of a filled model number for this product.

Example : HUB - MATTIVO - 1W/F - WH - 4050K





Monder LED Surface/Suspended Linear Task Lights

General Specifications

Mounting Type	Surface
Limited Warranty	2 Years
Lighting Source Type	SMD LED

Fixture Specifications

Housing Material	Extruded Aluminium
Diffuser Material	Polycarbonate
Surface Finish	Anodised
Driver Type	External

Performance Specifications

Colour rendering index (CRI)	80+
Start up time	Instant
Efficacy (Lm / W)	100+

Electrical Specifications

Input Voltage (VAC)	150 - 270 VAC
Total Harmonic Distorsion	Upto 10%
Power Factor	0.95 +
Driver Efficiency	Upto 80%

Safety Features

Ingress Protection	IP44
Surge Protection	Upto 2KV
Short Circuit Protection	Yes
Open Circuit Protection	Yes

Environmental Specification

Working Temperature	0 to 40 C
Vibrations	1G

Mechanical Specifications

Luminaire Dimension (L X W X H)	26.5mmX29mm
---------------------------------	-------------

HOW TO ORDER

HUB - MONDER - 3W/F - BL - 4050K

Input Power	1	Housing Colour	2
1W/F : 1W/F		GR : Grey	
3W/F : 3W/F		WH : White	
5W/F : 5W/F		BL : Black	

Colour Temperature (CCT)	3
2732K : 2700K - 3200K	
4050K : 4000K - 5000K	
6050K : 6000K - 6500K	

How to order example

To order a Hublit products, you can choose an Input Power from the values above from the minimum value to the maximum value, in this case we use smallest value. Similarly you can choose from the Colour Temperature (CCT) options from 2700K to 6500K and so on to generate the model number; Please find the example of a filled model number for this product.

Example : HUB - MONDER - 3W/F - BL - 4050K





Montro LED Surface/Suspended Linear Task Lights

General Specifications

Mounting Type	Surface
Limited Warranty	2 Years
Lighting Source Type	SMD LED

Fixture Specifications

Housing Material	Extruded Aluminium
Diffuser Material	Polycarbonate
Surface Finish	Anodised
Driver Type	External

Performance Specifications

Colour rendering index (CRI)	80+
Start up time	Instant
Efficacy (Lm / W)	100+

Electrical Specifications

Input Voltage (VAC)	150 - 270 VAC
Total Harmonic Distorsion	Upto 10%
Power Factor	0.95 +
Driver Efficiency	Upto 80%

Safety Features

Ingress Protection	IP44
Surge Protection	Upto 2KV
Short Circuit Protection	Yes
Open Circuit Protection	Yes

Environmental Specification

Working Temperature	0 to 40 C
Vibrations	1G

Mechanical Specifications

Luminaire Dimension (L X W X H)	35mm X 85mm
---------------------------------	-------------

HOW TO ORDER

HUB - MONTRO - 12W/F - GR - 4050K

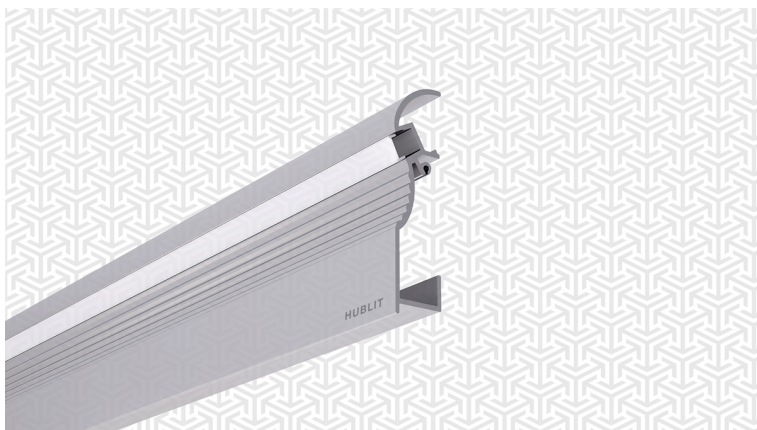
Input Current (mA)	1	Housing Colour	2
4W/ : 4W/		GR : Grey	
12W/F : 12W/F		WH : White	
20W/F : 20W/F		BL : Black	

Colour Temperature (CCT)	3
2732K : 2700K - 3200K	
4050K : 4000K - 5000K	
6050K : 6000K - 6500K	

How to order example

To order a Hublit products, you can choose an Input Power from the values above from the minimum value to the maximum value, in this case we use smallest value. Similarly you can choose from the Colour Temperature (CCT) options from 2700K to 6500K and so on to generate the model number; Please find the example of a filled model number for this product.

Example : HUB - MONTRO - 12W/F - GR - 4050K



Nadiate LED Surface/Suspended Linear Task Lights

General Specifications

Mounting Type	Surface
Limited Warranty	2 Years
Lighting Source Type	SMD LED

Fixture Specifications

Housing Material	Extruded Aluminium
Diffuser Material	Polycarbonate
Surface Finish	Anodised
Driver Type	External

Performance Specifications

Colour rendering index (CRI)	80+
Start up time	Instant
Efficacy (Lm / W)	100+

Electrical Specifications

Input Voltage (VAC)	150 - 270 VAC
Total Harmonic Distorsion	Upto 10%
Input Frequency	50 to 60 Hz
Power Factor	0.95 +
Driver Efficiency	Upto 80%

Safety Features

Ingress Protection	IP44
Surge Protection	Upto 2KV
Short Circuit Protection	Yes
Open Circuit Protection	Yes

Environmental Specification

Working Temperature	0 to 40 C
Vibrations	1G

Mechanical Specifications

Luminaire Dimension (L X W X H)	25mm X 25mm
---------------------------------	-------------

HOW TO ORDER

HUB - NADIATE - 3W/F - WH - 2732K

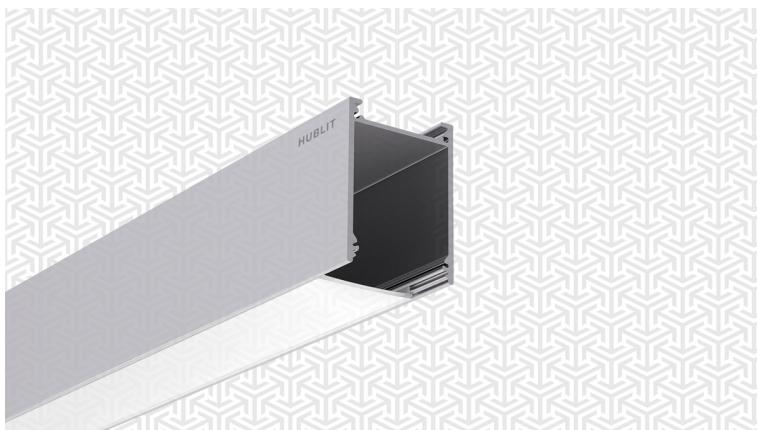
Input Power	1	Housing Colour	2
3W/F : 3W/F		GR : Grey	
5W/F : 5W/F		WH : White	
		BL : Black	

Colour Temperature (CCT)	3
2732K : 2700K - 3200K	
4050K : 4000K - 5000K	
6050K : 6000K - 6500K	

How to order example

To order a Hublit products, you can choose an Input Power from the values above from the minimum value to the maximum value, in this case we use smallest value. Similarly you can choose from the Colour Temperature (CCT) options from 2700K to 6500K and so on to generate the model number; Please find the example of a filled model number for this product.

Example : HUB - NADIATE - 3W/F - WH - 2732K



Natino LED Surface/Suspended Linear Task Lights

General Specifications

Mounting Type	Surface
Limited Warranty	2 Years
Lighting Source Type	SMD LED

Fixture Specifications

Housing Material	Extruded Aluminium
Diffuser Material	Polycarbonate
Surface Finish	Anodised
Driver Type	External

Performance Specifications

Colour rendering index (CRI)	80+
Start up time	Instant
Efficacy (Lm / W)	100+

Electrical Specifications

Input Voltage (VAC)	150 - 270 VAC
Total Harmonic Distorsion	Upto 10%
Power Factor	0.95 +
Driver Efficiency	Upto 80%

Safety Features

Ingress Protection	IP44
Surge Protection	Upto 2KV
Short Circuit Protection	Yes
Open Circuit Protection	Yes

Environmental Specification

Working Temperature	0 to 40 C
Vibrations	1G

Mechanical Specifications

Luminaire Dimension (L X W X H)	60mm X 80mm
---------------------------------	-------------

HOW TO ORDER

HUB	-	NATINO	-	20W/F	-	GR	-	2732K
-----	---	--------	---	-------	---	----	---	-------

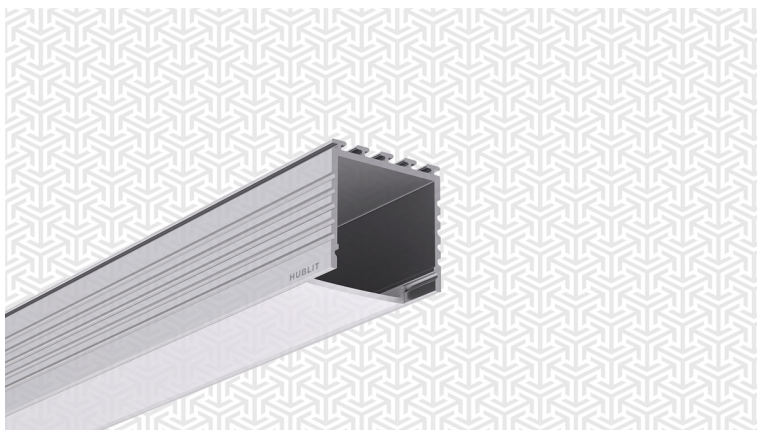
Input Power	1	Housing Colour	2
12W/F : 12W/F		GR : Grey	
20W/F : 20W/F		WH : White	
		BL : Black	

Colour Temperature (CCT)	3
2732K : 2700K - 3200K	
6050K : 6000K - 6500K	

How to order example

To order a Hublit products, you can choose an Input Power from the values above from the minimum value to the maximum value, in this case we use smallest value. Similarly you can choose from the Colour Temperature (CCT) options from 2700K to 6500K and so on to generate the model number; Please find the example of a filled model number for this product.

Example : HUB - NATINO - 20W/F - GR - 2732K



Normanda LED Surface/Suspended Linear Task Lights

General Specifications

Mounting Type	Surface
Limited Warranty	2 Years
Lighting Source Type	SMD LED

Fixture Specifications

Housing Material	Extruded Aluminium
Diffuser Material	Polycarbonate
Surface Finish	Anodised
Driver Type	External

Performance Specifications

Colour rendering index (CRI)	80+
Start up time	Instant
Efficacy (Lm / W)	100+

Electrical Specifications

Input Voltage (VAC)	150 - 270 VAC
Total Harmonic Distorsion	Upto 10%
Power Factor	0.95 +
Driver Efficiency	Upto 80%

Safety Features

Ingress Protection	IP44
Surge Protection	Upto 2KV
Short Circuit Protection	Yes
Open Circuit Protection	Yes

Environmental Specification

Working Temperature	0 to 40 C
Vibrations	1G

Mechanical Specifications

Luminaire Dimension (L X W X H)	35mm X 35mm
---------------------------------	-------------

HOW TO ORDER

HUB - NORMANDA - 9W/F - BL - 4050K

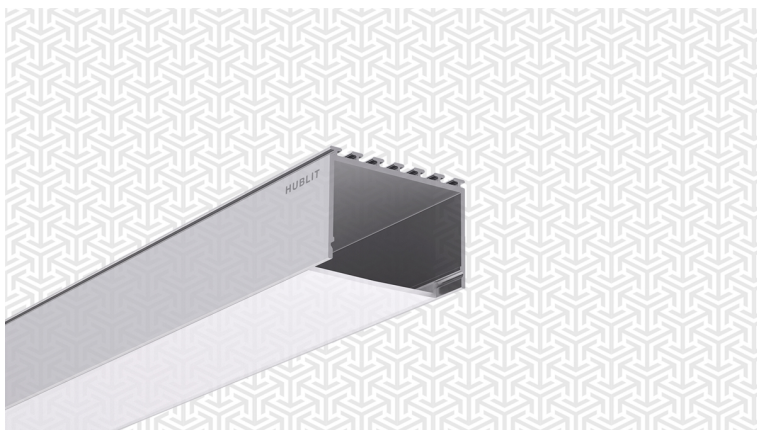
Input Power	1	Housing Colour	2
3W/F : 3W/F		GR : Grey	
9W/F : 9W/F		WH : White	
15W/F : 15W/F		BL : Black	

Colour Temperature (CCT)	3
2732K : 2700K - 3200K	
4050K : 4000K - 5000K	
6050K : 6000K - 6500K	

How to order example

To order a Hublit products, you can choose an Input Power from the values above from the minimum value to the maximum value, in this case we use smallest value. Similarly you can choose from the Colour Temperature (CCT) options from 2700K to 6500K and so on to generate the model number; Please find the example of a filled model number for this product.

Example : HUB - NORMANDA - 9W/F - BL - 4050K



Obesso LED Surface/Suspended Linear Task Lights

General Specifications

Mounting Type	Surface
Limited Warranty	2 Years
Lighting Source Type	SMD LED

Fixture Specifications

Housing Material	Extruded Aluminium
Diffuser Material	Polycarbonate
Surface Finish	Anodised
Driver Type	External

Performance Specifications

Colour rendering index (CRI)	80+
Start up time	Instant
Efficacy (Lm / W)	100+

Electrical Specifications

Input Voltage (VAC)	150 - 270 VAC
Total Harmonic Distorsion	Upto 10%
Power Factor	0.95 +
Driver Efficiency	Upto 80%

Safety Features

Ingress Protection	IP44
Surge Protection	Upto 2KV
Short Circuit Protection	Yes
Open Circuit Protection	Yes

Environmental Specification

Working Temperature	0 to 40 C
Vibrations	1G

Mechanical Specifications

Luminaire Dimension (L X W X H)	50mm X 35mm
---------------------------------	-------------

HOW TO ORDER

HUB - OBESSO - 3W/F - BL - 2732K

Input Power	1	Housing Colour	2
3W/F : 3W/F		GR : Grey	
9W/F : 9W/F		WH : White	
15W/F : 15W/F		BL : Black	

Colour Temperature (CCT)	3
2732K : 2700K - 3200K	
4050K : 4000K - 5000K	
6050K : 6000K - 6500K	

How to order example

To order a Hublit products, you can choose an Input Power from the values above from the minimum value to the maximum value, in this case we use smallest value. Similarly you can choose from the Colour Temperature (CCT) options from 2700K to 6500K and so on to generate the model number; Please find the example of a filled model number for this product.

Example : HUB - OBESSO - 3W/F - BL - 2732K



Offerato LED Surface/Suspended Linear Task Lights

General Specifications

Mounting Type	Surface
Limited Warranty	2 Years
Lighting Source Type	SMD LED

Fixture Specifications

Housing Material	Extruded Aluminium
Diffuser Material	Polycarbonate
Surface Finish	Anodised
Driver Type	External

Performance Specifications

Colour rendering index (CRI)	80+
Start up time	Instant
Efficacy (Lm / W)	100+

Electrical Specifications

Input Voltage (VAC)	150 - 270 VAC
Total Harmonic Distorsion	Upto 10%
Power Factor	0.95 +
Driver Efficiency	Upto 80%

Safety Features

Ingress Protection	IP44
Surge Protection	Upto 2KV
Short Circuit Protection	Yes
Open Circuit Protection	Yes

Environmental Specification

Working Temperature	0 to 40 C
Vibrations	1G

Mechanical Specifications

Luminaire Dimension (L X W X H)	23.6mm X 12mm
---------------------------------	---------------

HOW TO ORDER

HUB - OFFERATO - 6W/F - BL - 4050K

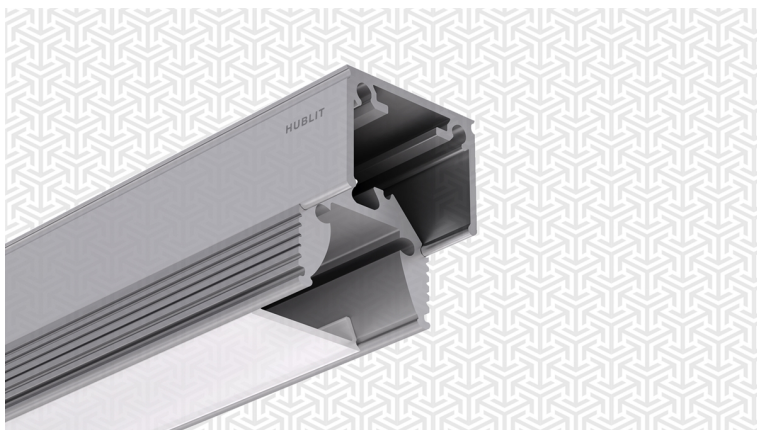
Input Power	1	Housing Colour	2
2W/F : 2W/F		GR : Grey	
6W/F : 6W/F		WH : White	
10W/F : 10W/F		BL : Black	

Colour Temperature (CCT)	3
2732K : 2700K - 3200K	
4050K : 4000K - 5000K	
6050K : 6000K - 6500K	

How to order example

To order a Hublit products, you can choose an Input Power from the values above from the minimum value to the maximum value, in this case we use smallest value. Similarly you can choose from the Colour Temperature (CCT) options from 2700K to 6500K and so on to generate the model number; Please find the example of a filled model number for this product.

Example : HUB - OFFERATO - 6W/F - BL - 4050K



Paratto LED Surface/Suspended Linear Task Lights

General Specifications

Mounting Type	Surface
Limited Warranty	2 Years
Lighting Source Type	SMD LED

Fixture Specifications

Housing Material	Extruded Aluminium
Diffuser Material	Polycarbonate
Surface Finish	Anodised
Driver Type	External

Performance Specifications

Colour rendering index (CRI)	80+
Start up time	Instant
Efficacy (Lm / W)	100+

Electrical Specifications

Input Voltage (VAC)	150 - 270 VAC
Total Harmonic Distorsion	Upto 10%
Power Factor	0.95 +
Driver Efficiency	Upto 80%

Safety Features

Ingress Protection	IP44
Surge Protection	Upto 2KV
Short Circuit Protection	Yes
Open Circuit Protection	Yes

Environmental Specification

Working Temperature	0 to 40 C
Vibrations	1G

Mechanical Specifications

Luminaire Dimension (L X W X H)	25mm X 30mm
---------------------------------	-------------

HOW TO ORDER

HUB - PARATTO - 3W/F - GR - 2732K

Input Power	1	Housing Colour	2
1W/F : 1W/F		GR : Grey	
3W/F : 3W/F		WH : White	
5W/F : 5W/F		BL : Black	

Colour Temperature (CCT)	3
2732K : 2700K - 3200K	
4050K : 4000K - 5000K	
6050K : 6000K - 6500K	

How to order example

To order a Hublit products, you can choose an Input Power from the values above from the minimum value to the maximum value, in this case we use smallest value. Similarly you can choose from the Colour Temperature (CCT) options from 2700K to 6500K and so on to generate the model number; Please find the example of a filled model number for this product.

Example : HUB - PARATTO - 3W/F - GR - 2732K



Rembo LED Surface/Suspended Linear Task Lights

General Specifications

Mounting Type	Surface
Limited Warranty	2 Years
Lighting Source Type	SMD LED

Fixture Specifications

Housing Material	Extruded Aluminium
Diffuser Material	Polycarbonate
Surface Finish	Anodised
Driver Type	External

Performance Specifications

Colour rendering index (CRI)	80+
Start up time	Instant
Efficacy (Lm / W)	100+

Electrical Specifications

Input Voltage (VAC)	150 - 270 VAC
Total Harmonic Distorsion	Upto 10%
Power Factor	0.95 +
Driver Efficiency	Upto 80%

Safety Features

Ingress Protection	IP44
Surge Protection	Upto 2KV
Short Circuit Protection	Yes
Open Circuit Protection	Yes

Environmental Specification

Working Temperature	0 to 40 C
Vibrations	1G

Mechanical Specifications

Luminaire Dimension (L X W X H)	50mm X 70mm
---------------------------------	-------------

HOW TO ORDER

HUB - REMBO - 3W/F - BL - 2732K

Input Power	1	Housing Colour	2
3W/F : 3W/F		GR : Grey	
9W/F : 9W/F		WH : White	
15W/F : 15W/F		BL : Black	

Colour Temperature (CCT)	3
2732K : 2700K - 3200K	
4050K : 4000K - 5000K	
6050K : 6000K - 6500K	

How to order example

To order a Hublit products, you can choose an Input Power from the values above from the minimum value to the maximum value, in this case we use smallest value. Similarly you can choose from the Colour Temperature (CCT) options from 2700K to 6500K and so on to generate the model number; Please find the example of a filled model number for this product.

Example : HUB - REMBO - 3W/F - BL - 2732K



Rendono LED Surface/Suspended Linear Task Lights

General Specifications

Mounting Type	Surface
Limited Warranty	2 Years
Lighting Source Type	SMD LED

Fixture Specifications

Housing Material	Extruded Aluminium
Diffuser Material	Polycarbonate
Surface Finish	Anodised
Driver Type	External

Performance Specifications

Colour rendering index (CRI)	80+
Start up time	Instant
Efficacy (Lm / W)	100+

Electrical Specifications

Input Voltage (VAC)	150 - 270 VAC
Total Harmonic Distorsion	Upto 10%
Power Factor	0.95 +
Driver Efficiency	Upto 80%

Safety Features

Ingress Protection	IP44
Surge Protection	Upto 2KV
Short Circuit Protection	Yes
Open Circuit Protection	Yes

Environmental Specification

Working Temperature	0 to 40 C
Vibrations	1G

Mechanical Specifications

Luminaire Dimension (L X W X H)	23.6mm X 18mm
---------------------------------	---------------

HOW TO ORDER

HUB - RENDONO - 10W/F - BL - 2732K

Input Power	1	Housing Colour	2
2W/F : 2W/F		GR : Grey	
6W/F : 6W/F		WH : White	
10W/F : 10W/F		BL : Black	

Colour Temperature (CCT)	3
2732K : 2700K - 3200K	
4050K : 4000K - 5000K	
6050K : 6000K - 6500K	

How to order example

To order a Hublit products, you can choose an Input Power from the values above from the minimum value to the maximum value, in this case we use smallest value. Similarly you can choose from the Colour Temperature (CCT) options from 2700K to 6500K and so on to generate the model number; Please find the example of a filled model number for this product.

Example : HUB - RENDONO - 10W/F - BL - 2732K



Solitica LED Surface/Suspended Linear Task Lights

General Specifications

Mounting Type	Surface
Limited Warranty	2 Years
Lighting Source Type	SMD LED

Fixture Specifications

Housing Material	Extruded Aluminium
Diffuser Material	Polycarbonate
Surface Finish	Anodised
Driver Type	External

Performance Specifications

Colour rendering index (CRI)	80+
Start up time	Instant
Efficacy (Lm / W)	100+

Electrical Specifications

Input Voltage (VAC)	150 - 270 VAC
Total Harmonic Distorsion	Upto 10%
Power Factor	0.95 +
Driver Efficiency	Upto 80%

Safety Features

Ingress Protection	IP44
Surge Protection	Upto 2KV
Short Circuit Protection	Yes
Open Circuit Protection	Yes

Environmental Specification

Working Temperature	0 to 40 C
Vibrations	1G

Mechanical Specifications

Luminaire Dimension (L X W X H)	50mm X 70mm
---------------------------------	-------------

HOW TO ORDER

HUB	-	SOLITICA	-	15W/F	-	BL	-	4050K
-----	---	----------	---	-------	---	----	---	-------

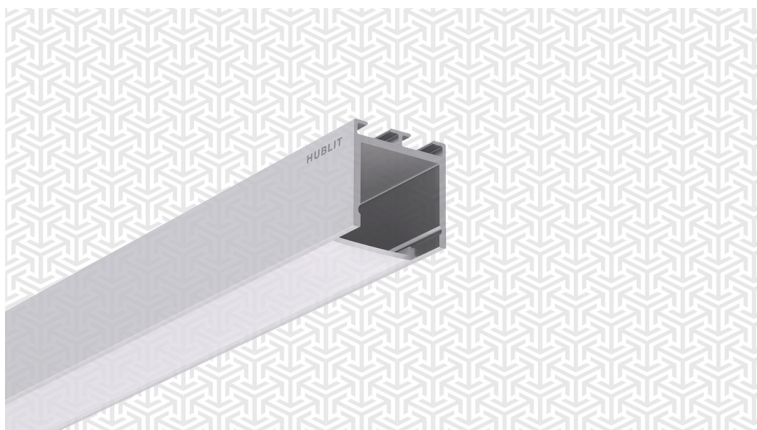
Input Power	1	Housing Colour	2
3W/F : 3W/F		GR : Grey	
9W/F : 9W/F		WH : White	
15W/F : 15W/F		BL : Black	

Colour Temperature (CCT)	3
2732K : 2700K - 3200K	
4050K : 4000K - 5000K	
6050K : 6000K - 6500K	

How to order example

To order a Hublit products, you can choose an Input Power from the values above from the minimum value to the maximum value, in this case we use smallest value. Similarly you can choose from the Colour Temperature (CCT) options from 2700K to 6500K and so on to generate the model number; Please find the example of a filled model number for this product.

Example : HUB - SOLITICA - 15W/F - BL - 4050K



Suivisto LED Surface/Suspended Linear Task Lights

General Specifications

Mounting Type	Surface
Limited Warranty	2 Years
Lighting Source Type	SMD LED

Fixture Specifications

Housing Material	Extruded Aluminium
Diffuser Material	Polycarbonate
Surface Finish	Anodised
Driver Type	External

Performance Specifications

Colour rendering index (CRI)	80+
Start up time	Instant
Efficacy (Lm / W)	100+

Electrical Specifications

Input Voltage (VAC)	150 - 270 VAC
Total Harmonic Distorsion	Upto 10%
Power Factor	0.95 +
Driver Efficiency	Upto 80%

Safety Features

Ingress Protection	IP44
Surge Protection	Upto 2KV
Short Circuit Protection	Yes
Open Circuit Protection	Yes

Environmental Specification

Working Temperature	0 to 40 C
Vibrations	1G

Mechanical Specifications

Luminaire Dimension (L X W X H)	25mm X 25mm
---------------------------------	-------------

HOW TO ORDER

HUB - SUIVISTO - 6W/F - WH - 2732K

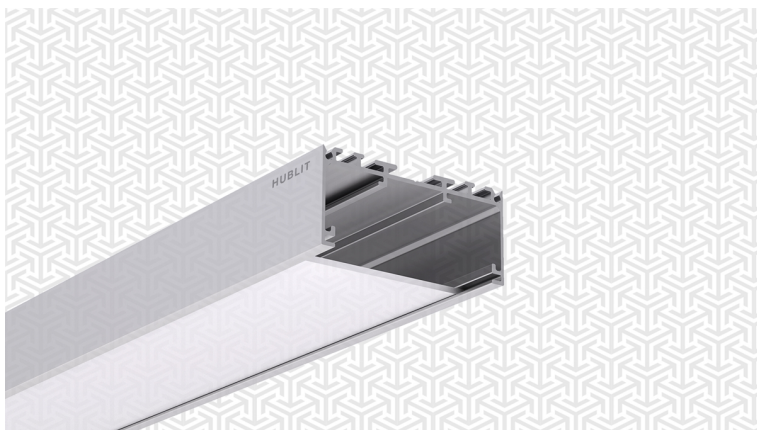
Input Power	1	Housing Colour	2
2W/F : 2W/F		GR : Grey	
6W/F : 6W/F		WH : White	
10W/F : 10W/F		BL : Black	

Colour Temperature (CCT)	3
2732K : 2700K - 3200K	
4050K : 4000K - 5000K	
6050K : 6000K - 6500K	

How to order example

To order a Hublit products, you can choose an Input Power from the values above from the minimum value to the maximum value, in this case we use smallest value. Similarly you can choose from the Colour Temperature (CCT) options from 2700K to 6500K and so on to generate the model number; Please find the example of a filled model number for this product.

Example : HUB - SUIVISTO - 6W/F - WH - 2732K



Tranno LED Surface/Suspended Linear Task Lights

General Specifications

Mounting Type	Surface
Limited Warranty	2 Years
Lighting Source Type	SMD LED

Fixture Specifications

Housing Material	Extruded Aluminium
Diffuser Material	Polycarbonate
Surface Finish	Anodised
Driver Type	External

Performance Specifications

Colour rendering index (CRI)	80+
Start up time	Instant
Efficacy (Lm / W)	100+

Electrical Specifications

Input Voltage (VAC)	150 - 270 VAC
Total Harmonic Distorsion	Upto 10%
Power Factor	0.95 +
Driver Efficiency	Upto 80%

Safety Features

Ingress Protection	IP44
Surge Protection	Upto 2KV
Short Circuit Protection	Yes
Open Circuit Protection	Yes

Environmental Specification

Working Temperature	0 to 40 C
Vibrations	1G

Mechanical Specifications

Luminaire Dimension (L X W X H)	75mm X 35mm
---------------------------------	-------------

HOW TO ORDER

HUB - TRANNO - 9W/F - GR - 4050K

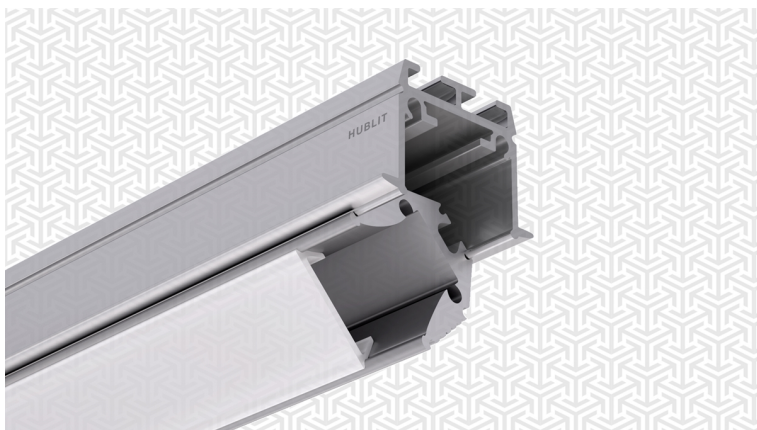
Input Power	1	Housing Colour	2
3W/F : 3W/F		GR : Grey	
9W/F : 9W/F		WH : White	
15W/F : 15W/F		BL : Black	

Colour Temperature (CCT)	3
2732K : 2700K - 3200K	
4050K : 4000K - 5000K	
6050K : 6000K - 6500K	

How to order example

To order a Hublit products, you can choose an Input Power from the values above from the minimum value to the maximum value, in this case we use smallest value. Similarly you can choose from the Colour Temperature (CCT) options from 2700K to 6500K and so on to generate the model number; Please find the example of a filled model number for this product.

Example : HUB - TRANNO - 9W/F - GR - 4050K



Zealano LED Surface/Suspended Linear Task Lights

General Specifications

Mounting Type	Suspended
Limited Warranty	2 Years
Lighting Source Type	SMD LED

Fixture Specifications

Housing Material	Extruded Aluminium
Diffuser Material	Polycarbonate
Surface Finish	Anodised
Driver Type	External

Performance Specifications

Colour rendering index (CRI)	80+
Start up time	Instant
Efficacy (Lm / W)	100+

Electrical Specifications

Input Voltage (VAC)	150 - 270 VAC
Total Harmonic Distorsion	Upto 10%
Power Factor	0.95 +
Driver Efficiency	Upto 80%

Safety Features

Ingress Protection	IP44
Surge Protection	Upto 2KV
Short Circuit Protection	Yes
Open Circuit Protection	Yes

Environmental Specification

Working Temperature	0 to 40 C
Vibrations	1G

Mechanical Specifications

Luminaire Dimension (L X W X H)	32mm X 33mm
---------------------------------	-------------

HOW TO ORDER

HUB - ZEALANO - 1W/F - WH - 6050K

Input Power	1	Housing Colour	2
1W/F : 1W/F		GR : Grey	
3W/F : 3W/F		WH : White	
5W/F : 5W/F		BL : Black	

Colour Temperature (CCT)	3
2732K : 2700K - 3200K	
4050K : 4000K - 5000K	
6050K : 6000K - 6500K	

How to order example

To order a Hublit products, you can choose an Input Power from the values above from the minimum value to the maximum value, in this case we use smallest value. Similarly you can choose from the Colour Temperature (CCT) options from 2700K to 6500K and so on to generate the model number; Please find the example of a filled model number for this product.

Example : HUB - ZEALANO - 1W/F - WH - 6050K